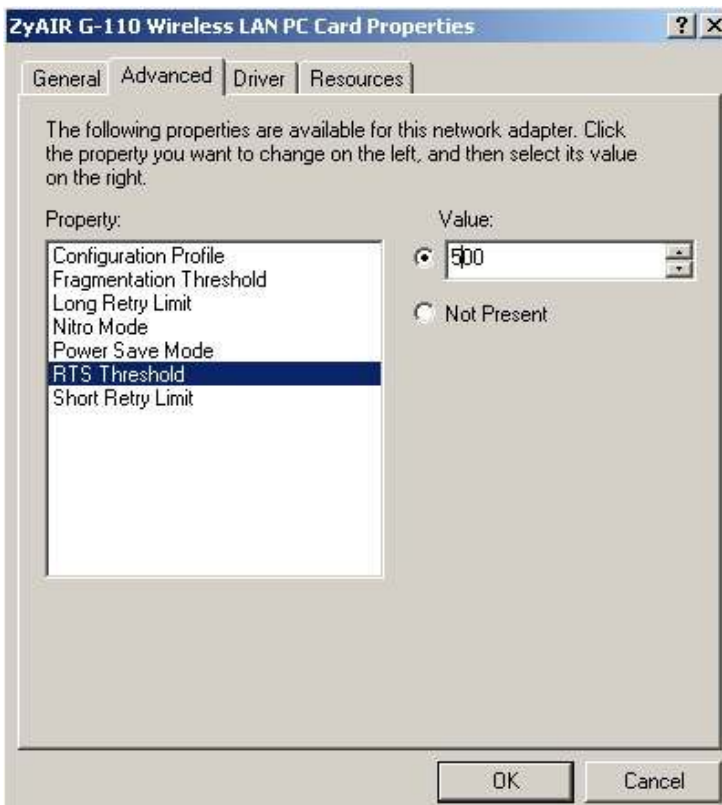
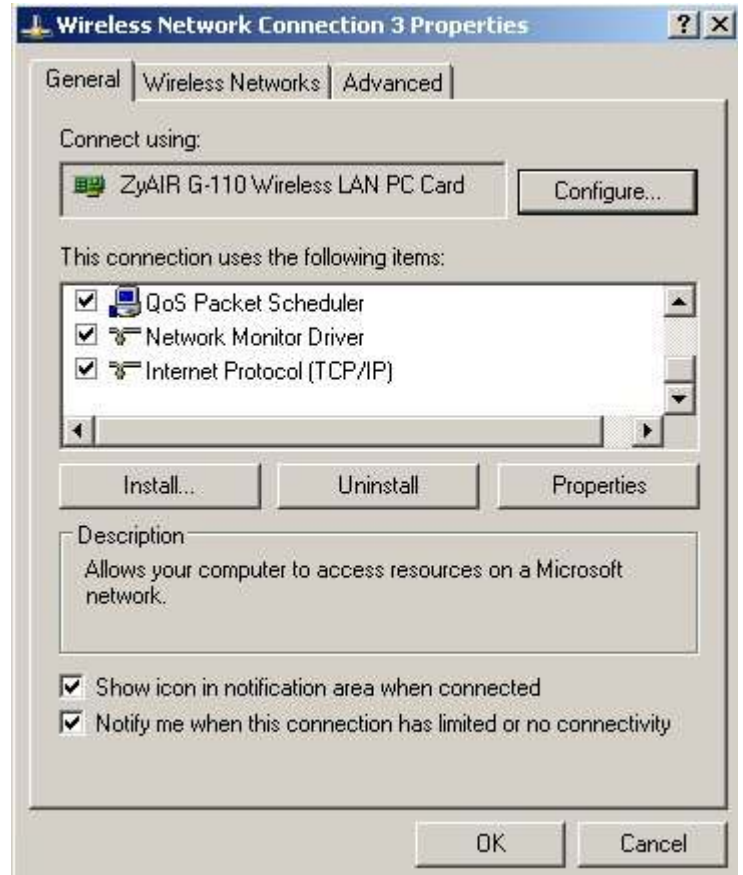
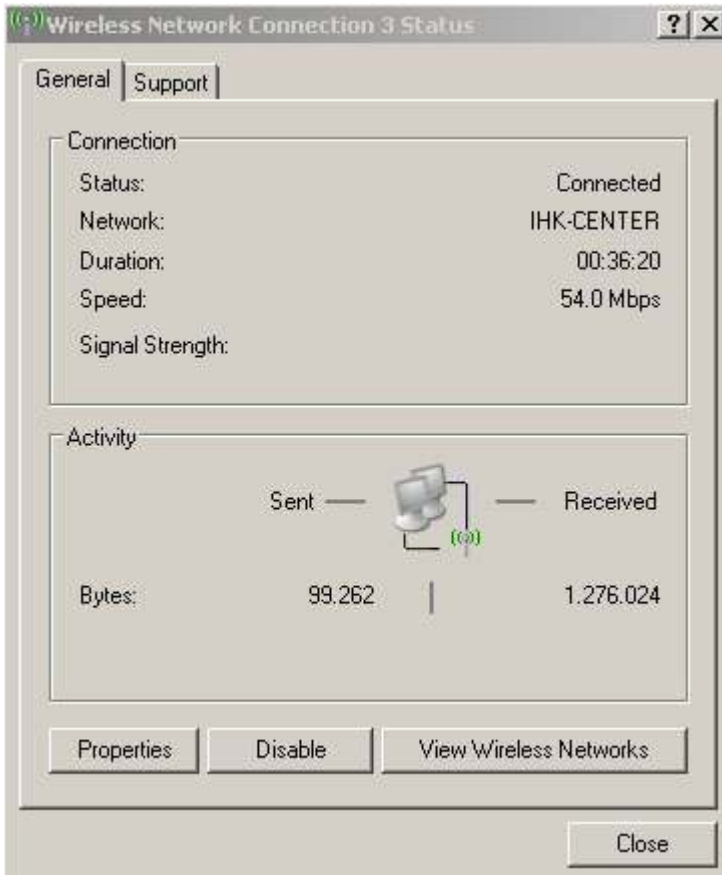


## Recommendation from the IT Department

It is possible to improve the stability of the wireless network by using handshaking (RST/CTS).

After entering your network card, chose "configure". For certain cards you must enter a value which should be set to 500.

For an XP-PC in English choose to following: Start/ Control Panel/ Network Connections/ Netcard name/ Properties/ Configure/



The images shown here may vary depending on the product. In that case you may have search a bit to find the right place. In certain cases RTS/CTS is activate as default.

This function is often omitted for cheaper products like netbooks.